



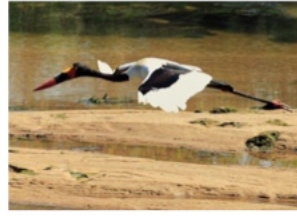
NGWENYA RIVER LODGE HB 50 AT HIPPO BEND ON THE CROCODILE RIVER WITH UNMATCHED VIEWS OF THE KRUGER NATIONAL PARK



SIT BACK AND LET THE KRUGER'S BIG 5 COME TO YOU

Ngwenya River Lodge HB 50 at Hippo Bend is set on the very edge of the Crocodile River overlooking a magnificent floodplain on the southern boundary of the Kruger National Park. The area teems with Big Game. The river is so close to the deck you can almost reach out and touch it. In fact it can be likened to your personal game viewing waterhole because the wildlife comes to the river and to you. The views from the lodge are breathtaking. Sit back and expect to see a wide variety of animals (including the Big Five) come to the river and floodplain to drink, graze and hunt. Frequently two or three of the Big Five (usually buffalo, elephant and rhino) may be seen on the floodplain at the same time and it is not uncommon to view all of the Big Five from the lodge in a single day. Sightings of crocodiles and hippos are a daily occurrence and kills are not uncommon.





Birdlife along the river is prolific and rich. With over 300 species of birds on the list, birders are guaranteed excellent sightings. Of special interest is the variety of birds associated with permanent waterways. Watch out for impressive birds such as iconic raptors, fish eagles, saddle-billed storks, african darters, finfoot, goliath and purple herons as well as a variety of kingfishers. The riverside deck is ideal for wildlife photography. Set your camera up and shoot away.



GO WILD IN STYLE



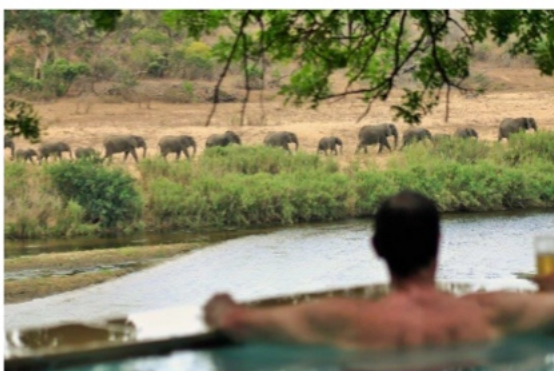
Ngwenya River Lodge (Hippo Bend 50) is TGCSA 4 Star graded and represents the pinnacle of luxury, space, comfort and exclusivity at Ngwenya. Fully air-conditioned and equipped this double-storey lodge has five bedrooms (two with king size double beds and three with two single beds each). All bedrooms have fully tiled *en-suite* bathrooms. The lodge is comfortably appointed (leather couches, DSTV etc) and has a fully equipped granite top kitchen with ample fridge and freezer space (double fridge freezers and a bar fridge) as well as a dishwasher and washing machine. The lodge has ceiling fans throughout. Undercover parking is available for three vehicles. To ensure complete relaxation the lodge is serviced daily except for Sundays (an optional extra by prior arrangement).



This uniquely situated riverside lodge has been designed for indoor/outdoor living. All bedrooms and living areas open onto sandstone tiled verandas leading onto Zimbabwe teak viewing decks set under the cool shade of a massive old Boerbean Tree. The game viewing deck offers stunning close up and panoramic views of the Crocodile River, its adjoining floodplain and the bird- and game-rich riverine bush.



A private and refreshing rim-flow pool with a "martini seat" is nestled amongst Leadwood, Appleleaf and Knobthorn trees on the very edge of the Crocodile River providing unmatched river views and welcome cool respite from the Lowveld heat.



ACTIVITIES

Ngwenya Lodge offers many amenities set in established tranquil gardens that are ideal for leisurely strolls, jogging, relaxed birding and tree spotting. Most of these facilities are no more than a 2 minute drive or a short walk from River Lodge HB 50. On-site there are six swimming pools, two tennis courts, mini-golf, trampolines, jumping castle and a number of game viewing hides along the riverfront. Indoor facilities include a games room with play-stations, big screen TV, table tennis

and snooker. A small convenience shop stocks essentials such as briquettes, bread, cereals, cool drinks, ice, ice creams, newspapers and the like. Guests can browse through the curio shop or be pampered at Tiffany's@Ngwenya a beauty and skin care salon. The La Fera Restaurant and pizzeria with its magnificent elevated views of the floodplain is renowned in the area for good food. It is open seven days a week for breakfast, lunch and dinner. Take-aways can also be ordered



Activities such as Open Safari Vehicle game drives, Kruger bush walks, elephant-back rides, quad biking, tiger fishing, microlight flights, golf and day tours to Maputo can all be arranged through the Ngwenya Reception activity desk. Crocodile Bridge Gate into the Kruger is only ten minutes away by car on a good tar road all the way.

GETTING THERE

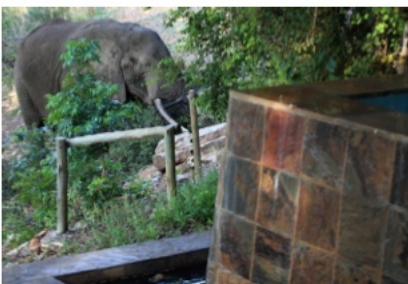
Ngwenya River Lodge HB 50 is easily accessible from all the main centers in South Africa and, in fact, almost anywhere in the world.

Access by car: Follow the N4 from Gauteng to Ngwenya. Drive time is approximately 4.5h.

Access by air: Daily flights connect Johannesburg's O.R. Tambo International Airport and Cape Town International Airport to Kruger Mpumulanga International Airport (KMIA) just outside Nelspruit. Car hire (Avis, Imperial, Hertz) is available at KMIA. Drive time from KMIA to the River Lodge is around 60 minutes.

RARE SHARED OWNERSHIP INVESTMENT OPPORTUNITY

There are only five double-storey riverside lodges with five-en-suite bedrooms in the whole of Ngwenya. They were specifically built for private investors. HB50 is one of these and is the closest of all of them to the river which means that it is also closest to visiting big game and river birds with excellent associated photographic opportunities. *It is where you want to be for the ideal couch safari.* Aside from exclusive multimillion rand riverside lodges in Leopard Creek you would be hard pressed to find another five bedroom lodge as close to the river as HB50. You can almost touch the head of an elephant feeding nearby or even look a hyena in the eye not to mention the proximity of local hippos wandering past in the reed-bed below.



Opportunities to acquire a shareholding in this uniquely situated riverside lodge are very rare. The majority of shareholders have been owners since the lodge was built. Each of the 13 shareholders is entitled to the exclusive use of 4 weeks per annum in perpetuity. Each of the four weeks falls into a different Kruger Park season. Specific use dates are allocated annually in advance according to a

predetermined rotational calendar. Unusable time may be rented out, offered to invitees, swapped for other times of the year with co-owners or space banked and exchanged via RCI for quality holidays elsewhere locally or abroad. The RCI Gold Crown grading of Ngwenya Lodge allows this lodge to be used as a very cost effective rand hedge for international holidays. The TGCSA 4 Star grading endorses the high quality of the accommodation. If you are interested in acquiring a share in this very special lodge get your name on the waiting list today.

**FOR SHARED OWNERSHIP OPPORTUNITIES IN
THE EXCLUSIVE 5 BEDROOM HIPPO BEND RIVER LODGES
CALL MIKE WHITING ON CELL NUMBER +27825515276
OR EMAIL michaelwhiting43@gmail.com**



RENTALS

This 10 sleeper lodge is rented out in its entirety. Weeks run from Friday to Friday.

RACK RATES 2020/21

Out of season rate: The rate is R4500 per night for the lodge for the first four guests and thereafter R720 per additional person per night up to the maximum occupancy of of ten people. The full rate is R8820 per night. Minimum rental period is three nights.

Peak season rate: The rate is R5000 per night for the lodge for the first four guests and thereafter R720 per additional person per night up to the maximum occupancy of of ten people. The full rate is R9320 per night. Minimum rental period is 5 nights.

Check-in is from 16:00 on the day of arrival. Check-out is by 10:00 latest on day of departure.

**IF THIS LOOKS LIKE YOUR DREAM KRUGER PARK HOLIDAY SPOT
THEN BOOK YOUR NEXT KRUGER STAY AT NGWENYA HIPPO BEND 50
BY CALLING KAMALA ON +27113277620 OR E-MAIL kamala@winchestermarketing.com**