



## FISH EAGLE VIEW RIVER LODGE MJEJANE GAME RESERVE **FRACTIONAL OWNERSHIP RESALE** A UNIQUE INVESTMENT OPPORTUNITY

**Mjejane Game Reserve** is a seamless ecological extension of the acclaimed Biyamiti region of the southern Kruger National Park. It shares almost 12 kms of spectacularly wild Crocodile River frontage with the Kruger and ever since the dropping of fences back in 2008 the Kruger's Big 5 have made Mjejane their home.



Mjejane Game Reserve falls under SANParks's conservation management authority which means that, in terms of the wildlife experience on offer, owning in Mjejane Game Reserve is no different to owning in the Kruger National Park. It is the only Big 5 private game reserve of its kind in the southern region of the Kruger. For Kruger enthusiasts it's a dream come true and a unique inheritance for future generations.



What really makes Mjejane Game Reserve especially unique is its low level bridge which spans the Crocodile River and links Mjejane directly into the Kruger Park's road network. This private bridge is for the exclusive conditional use of Mjejane owners only and is the first of its kind in the history of the Kruger National Park.

All riverfront stands in Mjejane Game Reserve were sold out in 2015 which means that the only way to acquire an investment in the highly sought after riverine ecozone is via resales which are few and far between.

## Fish Eagle View River Lodge



Fish Eagle View River Lodge (S25.24.21 and E31.40.40 ) is an exclusive shared ownership lodge with impressive uninterrupted views of the Crocodile River.



Large game trails, being indicative of wildlife movement to and from the river, converge on the northern bank of the Crocodile River immediately opposite the lodge.

The lodge also looks onto Crocodile Dam, a favorite drinking spot for buffalo and elephant. Sightings from the lodge have included lion, leopard, elephant, buffalo and more. It's not uncommon to have elephant come within close proximity to the lodge.

Spacious undercover patios and elevated viewing decks provide wonderful vantage points from which to view big game (Big 5 included) as well as the rich diversity of birdlife in the riverine ecozone.



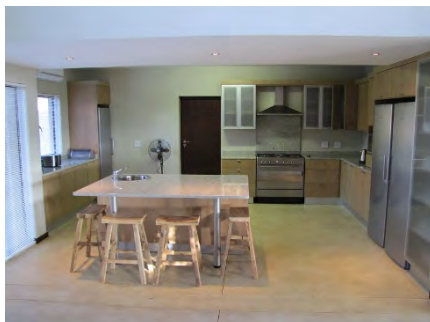
It really is the ultimate in relaxed wildlife viewing while going wild in style.



## Lodge Facilities

Fish Eagle View River Lodge is entered via an enclosed courtyard with a water feature. The courtyard serves as an “oasis” and safe haven from the surrounding bush especially for younger kids who may need to expend excess energy in a secure environment from time to time.

A courtyard walkway leads to the spacious open plan lounge, dining room and kitchen area. The lodge is air-conditioned throughout and has been furnished and decorated with carefully selected upmarket items and artifacts.



The kitchen is fully equipped with Smeg stove, microwave oven and more than adequate fridge and freezer space for a full complement of occupants. The kitchen leads to a scullery and pantry. The scullery is equipped with a washing machine, tumble drier, dishwasher and a chest freezer for ice.

The lounge opens via frameless glass stack-doors onto an expansive undercover outdoor living area with built-in barbeque, comfortable seating and a dining table for al fresco meals. A walkway leads from this patio to a boma with a firepit/braai. A rim-flow swimming pool with in-pool martini seat overlooks the Crocodile River and Kruger National Park.



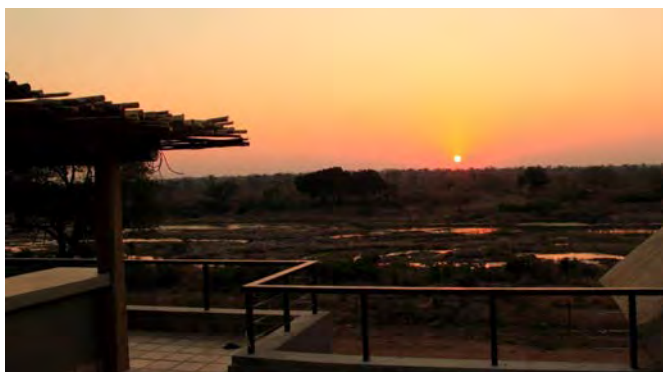


Five tastefully decorated *en-suite* bedrooms (all beds under mosquito nets) open onto undercover verandas. Two bedrooms have King size beds and full bathrooms and three bedrooms have 2 twin beds and showers. All *en-suites* open into a private outdoor showers.

A separate family/games room with DSTV and billiard/table tennis table opens onto a private deck with a view towards Crocodile Dam. The lodge is equipped with a small gym for those who would like to burn off calories while unwinding in the bush.



From the enclosed courtyard a staircase leads to a large upstairs viewing deck with pub and magnificent vistas over the adjoining Crocodile River and Kruger National Park. The pub is equipped with under-counter refrigeration.



The upstairs deck is ideal for enjoying sundowners while experiencing magnificent sunsets over the Crocodile River and adjoining Kruger Park bush. An outside shower on the viewing deck provides convenient cool relief while viewing game or sunbathing.



In addition to the five bedrooms in the main lodge, Fish Eagle View River Lodge has a private fully equipped free-standing air-conditioned chalet with an *en-suite* bedroom, lounge and kitchen. This brings the total available bed space at the lodge to twelve.

Fish Eagle View River Lodge is under the day to day supervision of a FGASA accredited game ranger who is available for taking lodge occupants on game drives in the lodge's own Open Safari Vehicle through Kruger Big 5 territory. The lodge is serviced daily from Monday to Saturday. Sunday servicing is an optional extra.



If Fish Eagle View River Lodge ticks all your boxes for the ideal Kruger Park bush retreat then call Mike Whiting for further details on +27825515276 or email [michaelwhiting43@gmail.com](mailto:michaelwhiting43@gmail.com)