



ON THE EDGE OF THE CROCODILE RIVER IN
MJEJANE PRIVATE GAME RESERVE
WITHIN THE GREATER KRUGER
NATIONAL PARK CONSERVATION AREA



Mjejane Game Reserve is a seamless ecological extension of the acclaimed Biyamiti region of the southern Kruger National Park. It shares almost 10 kms of spectacularly wild Crocodile River frontage with the Kruger and ever since the dropping of fences back in 2008 the Kruger's Big 5 have made Mjejane their home.



In terms of the wildlife experience on offer, staying in Mjejane Game Reserve is no different to staying in the Kruger National Park. It is the only Big 5 private game reserve of its kind in the southern region of the Kruger.



Saddlebill Drift River Lodge (S25.24.21 and E31.40.40) is an exclusive privately owned shared ownership lodge with impressive uninterrupted views of the Crocodile River.



Large game trails, being indicative of wildlife movement to and from the river, converge on the northern bank of the Crocodile River immediately opposite the lodge.



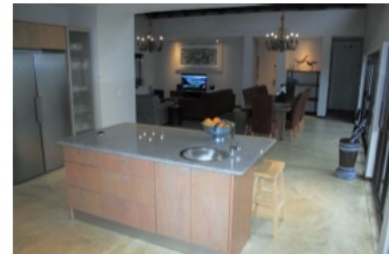
Sightings from the lodge have included lion, leopard, cheetah, elephant, wild dog, buffalo and more. It's not uncommon to have elephant come within close proximity to the lodge. Spacious undercover patios and

elevated viewing decks provide wonderful vantage points from which to view big game (Big 5 included) as well as the rich diversity of birdlife in the riverine ecozone. It really is the ultimate in relaxed wildlife viewing while going wild in style.

Lodge Facilities



Saddlebill Drift River Lodge is entered via an enclosed courtyard with a water feature. The courtyard serves as an "oasis" and safe haven from the surrounding bush especially for younger kids who may need to expend excess energy from time to time in a secure environment.



The courtyard walkway leads to the spacious open plan lounge, dining room and kitchen area. The lodge is fully air-conditioned throughout and has been furnished and decorated with carefully selected upmarket items and artefacts. The kitchen is fully equipped with Smeg stove, microwave oven and more than adequate fridge and freezer space for a full complement of up to 12 occupants. The kitchen leads to a scullery and pantry. The scullery is equipped with a washing machine, tumble drier, dishwasher and a chest freezer for ice. The lounge opens via frameless glass stack-doors onto an



expansive undercover outdoor living area with built-in barbecue, comfortable seating and a dining table for al fresco meals. A walkway leads from this patio to a boma with a firepit/braai. A rim-flow swimming pool overlooks the Crocodile River and Kruger National Park.



Five tastefully decorated *en-suite* bedrooms (all beds under mosquito nets) open onto undercover verandas. Two bedrooms have King size beds and full bathrooms and three bedrooms have 2 twin beds each and showers. All *en-suite* bathrooms open into a private outdoor showers.



A separate family/games room with DSTV and billiard/table tennis table opens onto a private deck with a view towards Crocodile Dam. The lodge is equipped with a small gym for those who would like to burn off calories while unwinding in the bush.

From the enclosed courtyard stairs lead to a large upstairs viewing deck with pub and magnificent vistas over the adjoining Crocodile River and Kruger National Park. The pub is equipped with under-counter refrigeration.



The upstairs deck is ideal for enjoying sundowners while experiencing magnificent sunsets over the Crocodile River and adjoining Kruger Park bush. An outside shower on the viewing deck provides convenient cool relief while viewing game or sunbathing.



In addition to the five bedrooms in the main lodge, Saddlebill Drift River Lodge has a private fully equipped free-standing air-conditioned bush suite with *en-suite* bedroom, lounge and fully equipped kitchen. This brings the total available bed space of the lodge to twelve.



Saddlebill Drift River Lodge is under the day to day supervision of a FGASA accredited game ranger who is available for taking lodge occupants on game drives through Big 5 territory in the lodge's own Open Safari Vehicle.

The lodge operates on a Friday to Friday calendar and is serviced daily from Monday to Saturday. Sunday servicing is an optional extra. Renting parties must take the entire lodge. Minimum rental rates apply. The minimum rental period is 3 nights out of season but may be longer in peak season



Saddlebill Drift River Lodge is 5-Star graded by the South African Tourism Grading Council. If Saddlebill Drift ticks all the right boxes for your ideal Kruger Park bush break then enquire about availability and seasonal rates today. Call Brenda on +27825536547 or Mike on +27825515276 or email brenda@winchestermarketing.com



If you love your Mjejane wildlife experience so much that you would like to enquire about the variety of ownership options on offer at Mjejane please call Mike Whiting on +278255155276 or email michaelwhiting43@gmail.com

Winchester
MARKETING
PRESTIGIOUS LIFESTYLE PROPERTIES